



SAP **Business One** Road Map

August 2022

PUBLIC

Legal disclaimer

The information in this presentation is confidential and proprietary to SAP and may not be disclosed without the permission of SAP. This presentation is not subject to your license agreement or any other service or subscription agreement with SAP. SAP has no obligation to pursue any course of business outlined in this document or any related presentation, or to develop or release any functionality mentioned therein. This document, or any related presentation, and SAP's strategy and possible future developments, products, and platforms, directions, and functionality are all subject to change and may be changed by SAP at any time for any reason without notice. The information in this document is not a commitment, promise, or legal obligation to deliver any material, code, or functionality. This document is provided without a warranty of any kind, either express or implied, including but not limited to the implied warranties of merchantability, fitness for a particular purpose, or noninfringement. This document is for informational purposes and may not be incorporated into a contract. SAP assumes no responsibility for errors or omissions in this document, except if such damages were caused by SAP's willful misconduct or gross negligence.

All forward-looking statements are subject to various risks and uncertainties that could cause actual results to differ materially from expectations. Readers are cautioned not to place undue reliance on these forward-looking statements, which speak only as of their dates, and they should not be relied upon in making purchasing decisions.

For all recent and planned innovations, potential data protection and privacy features include simplified deletion of personal data, reporting of personal data to an identified data subject, restricted access to personal data, masking of personal data, read access logging to special categories of personal data, change logging of personal data, and consent management mechanisms.

About SAP road maps

Companies today are planning their digital journeys – transforming business models, reengineering business processes, and reimagining work.

SAP road maps highlight innovations that may help you plan and implement your digital journey. They span products relevant to lines of business in your industry and explain how our innovations may add value to your business.

In our road maps, you can learn about our innovations along four different timelines:

1. **Recent innovations** for our products that have been launched in the past weeks or months and can already be purchased
2. **Planned innovations** for our products that are intended to be launched in the short term or midterm
3. **Product direction**, providing a long-term perspective on high-level development plans for innovations for our solutions – inspired by your requirements
4. **Product vision**, providing a high-level and long-term business perspective on innovations for our products

Table of contents

Product overview

- Product description
- Key trends and customer needs
- Road map overview and major product updates

Product road map

- Recent innovations
- Planned innovations
- Product direction

Our technology strategy is aligned to deliver the Intelligent Enterprise

To successfully execute on our strategy and safeguard customer success, we must ensure that we have not only the right components for the Intelligent Enterprise (applications, platform, and intelligent technologies) but also the right technology strategy for these components to work in concert with one another.

Our technology strategy will focus on these pillars:



Consumer-grade experience

Make sure that the business user's experience is as good as with consumer applications



Powerful platform

Drive ecosystem growth by enhancing and publishing APIs, embracing diverse developer frameworks



Built-in integration

Enable integrations with little or no effort to other SAP and third-party applications



Cloud

Enable applications to run smoothly in the cloud by detaching the applications from the underlying infrastructure



Applied intelligence

Embed artificial intelligence (AI), machine learning (ML), the Internet of Things (IoT), and advanced analytics technology to create business value

“SAP Business One is a centerpiece of SAP’s midmarket strategy, and therefore we are strategically investing into the product. We are making SAP Business One fit for the next generation, for the next decade, by enabling SAP digital services and SAP Business Technology Platform so the digital transformation can be done with SAP Business One.”

Rainer Zinow, SVP, Head of SAP Midmarket Product Management, SAP SE
August 2022

The future of SAP Business One in the Intelligent Enterprise



Internet of Things



Robotics and machine learning



New business models



E-commerce



Voice and intelligent assistants



Social

SAP Business One

SAP's best-selling ERP solution by number of customers



Used by **75,000+** customers, with **1.2+** million users



Available as **50** country localizations and in **28** languages



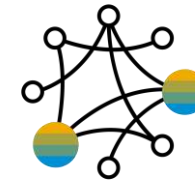
~**300** partners with **500+** solutions



Implemented by more than **850** value-added resellers worldwide



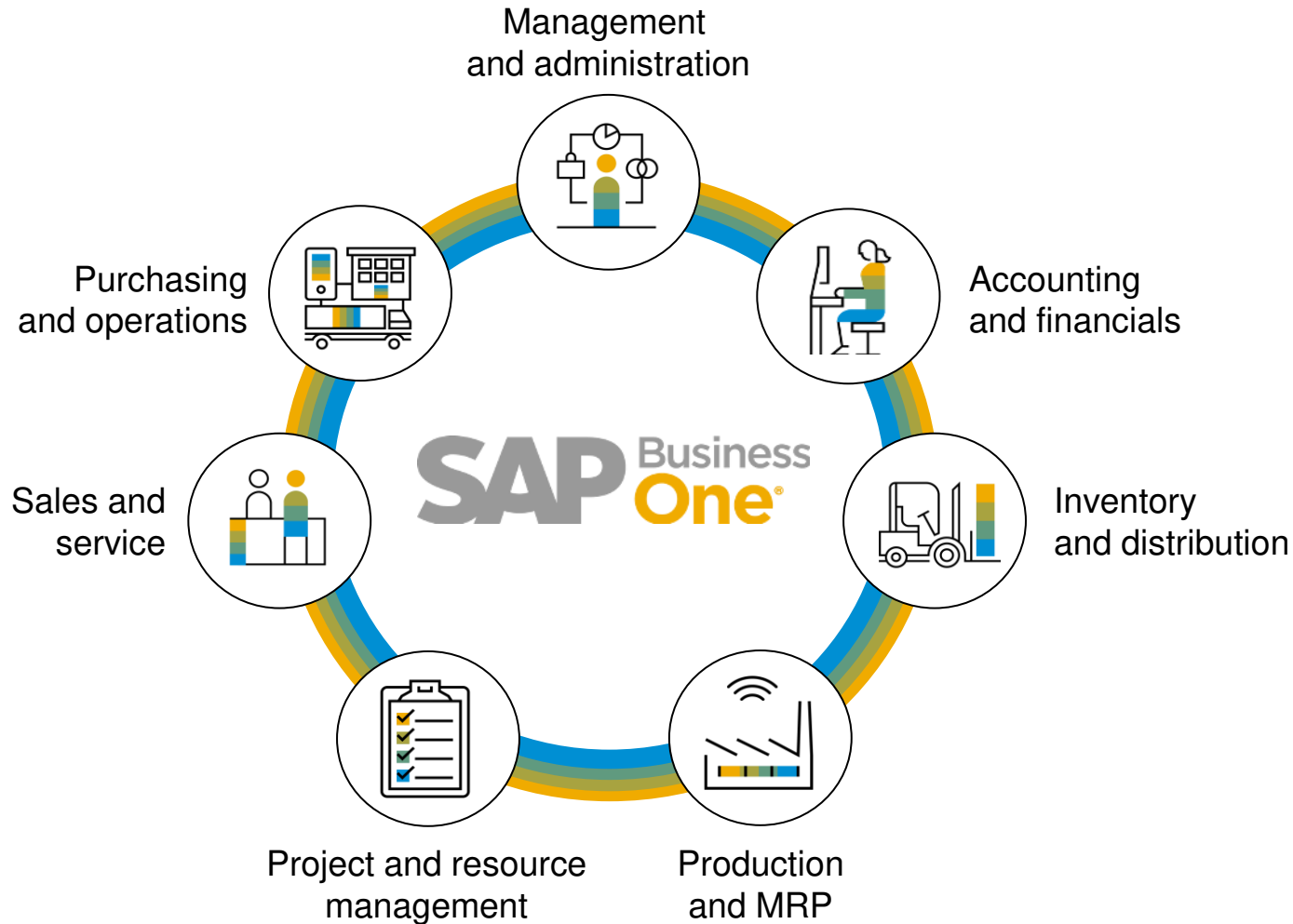
SAP Business One used in **>170** countries



360+ large enterprises running SAP Business One in **7,000+** subsidiaries

SAP Business One

Digital platform for small and midsize enterprises (SMEs)



Facts and figures:

>75,000 customers

50 country localizations
and **28** languages

~300 partners with **>500**
solutions

850 value-added resellers
that implement worldwide

Used in **>170** countries

>7,000 subsidiaries running
SAP Business One

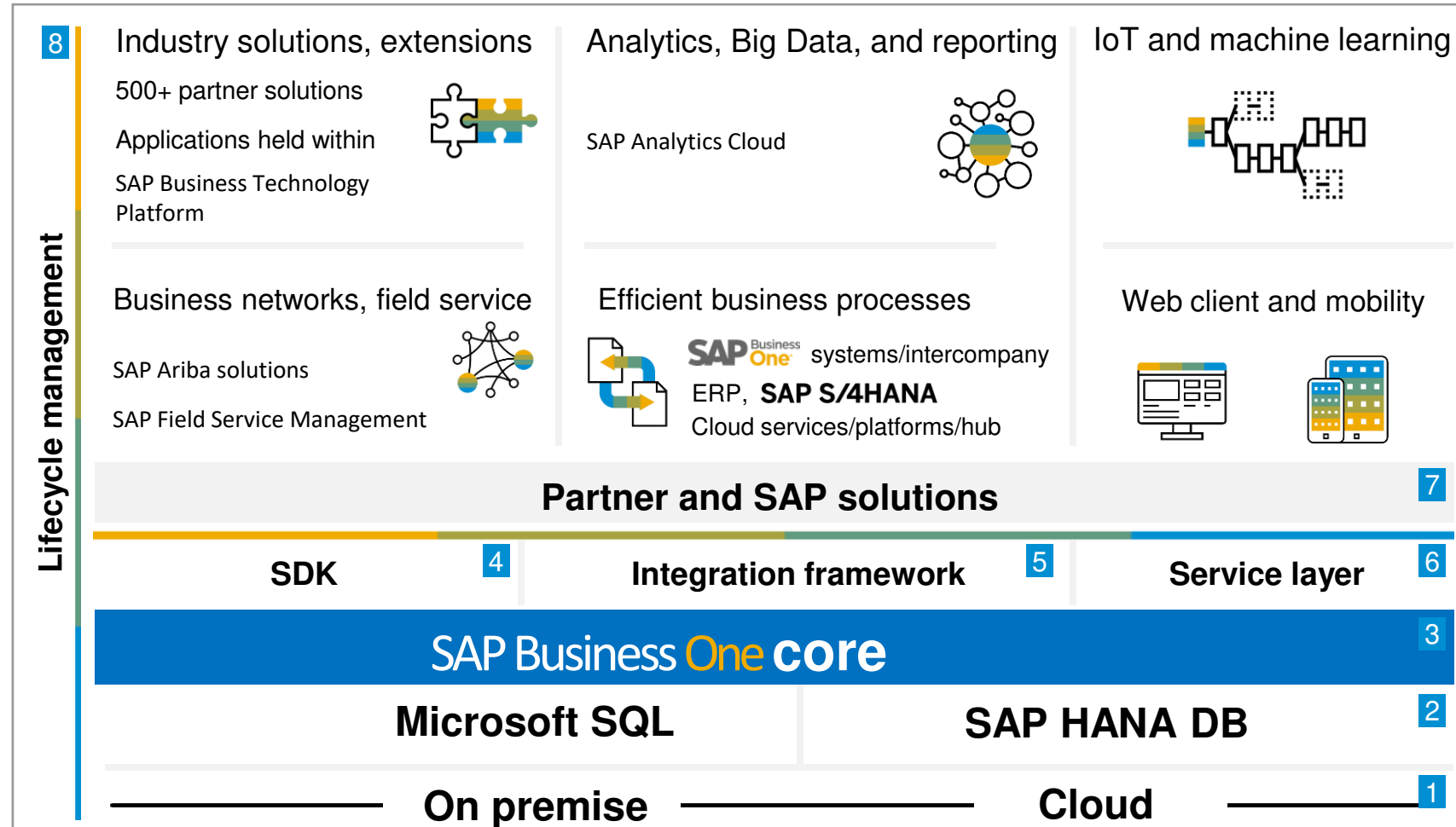
The digital core for SMEs

Enhanced by the digital enablers



SAP Business One solution stack

Customer needs and the value propositions of the product



- 1 Full deployment flexibility
- 2 Runs on in-memory technology
- 3 All standard business processes covered
- 4 Basic application programming interfaces (APIs)
- 5 Robust integration and collaboration
- 6 Interface for SAP HANA and Microsoft SQL applications
- 7 Extends the solution scope based on extensibility layer
- 8 Low cost of ownership and efficient support

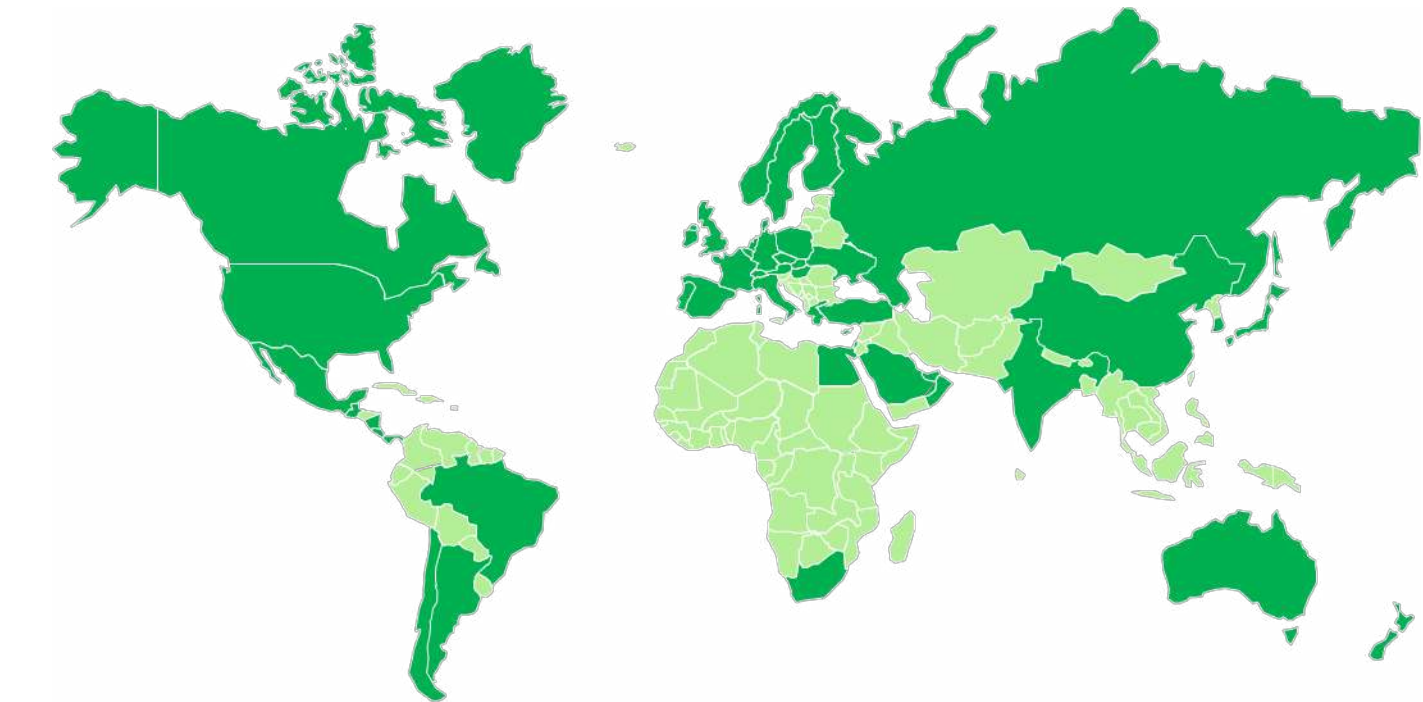
SAP Business One used in more than 170 countries

Master the challenge of globalization in your business

Current localizations (50)			
Argentina	Finland	Mexico	Slovakia
Australia	France	Netherlands	South Africa
Austria	Germany	New Zealand	South Korea
Belgium	Greece	Norway	Spain
Brazil	Guatemala	Oman	Sweden
Canada	Hong Kong, China	Panama	Switzerland
Chile	Hungary	Poland	Turkey
China	India	Portugal	Ukraine
Costa Rica	Ireland	Puerto Rico	United Arab Emirates
Cyprus	Israel	Qatar	United Kingdom
Czech Republic	Italy	Russia	United States
Denmark	Japan	Saudi Arabia	
Egypt	Lebanon	Singapore	

Countries making use of localizations

Customers in more than 120 countries use localization of other countries, own customization, or partner solution.



Current system languages (28):*

Arabic, Chinese (simplified/traditional), Czech, Danish, Dutch, English (UK/U.S.), Finnish, French, German, Greek, Hebrew, Hungarian, Italian, Japanese, Korean, Norwegian, Polish, Portuguese (Brazil), Portuguese, Russian, Slovak, Spanish (Latin America), Spanish, Swedish, Turkish, and Ukrainian

*Convenient option to make additional languages available is using a partner solution (for some countries bundled with functional add-ons) or to define customer-specific UI terms using the custom language tool as detailed in SAP Note [1757764](#).

© 2022 SAP SE or an SAP affiliate company. All rights reserved. | PUBLIC

This presentation and SAP's strategy and possible future developments are subject to change and may be changed by SAP at any time for any reason without notice. This document is provided without a warranty of any kind, either express or implied, including but not limited to the implied warranties of merchantability, fitness for a particular purpose, or noninfringement.

SAP Business One

Product areas of future investment

Vision: Strengthen SAP Business One as the right ERP for SMEs in the digital economy, offering flexible deployment models, a solid global business core, and leading user experience

Global and highly scalable real-time ERP

Provide a highly competitive solution, attractive maintenance model, enhanced localizations, and continuous improvements

Customer value in the digital economy

Transform flexible technology and innovations into customer value at low TCO; support fast adoption to new business models, customer growth, and intuitive Web client design

Full commitment on SAP HANA

Leverage exclusive advantages and capabilities of SAP HANA

Intuitive partner co-innovation and customization

Adopt integration framework 2.0, offer advanced developer experience on the service layer, including new design concepts, APIs, objects, and tools

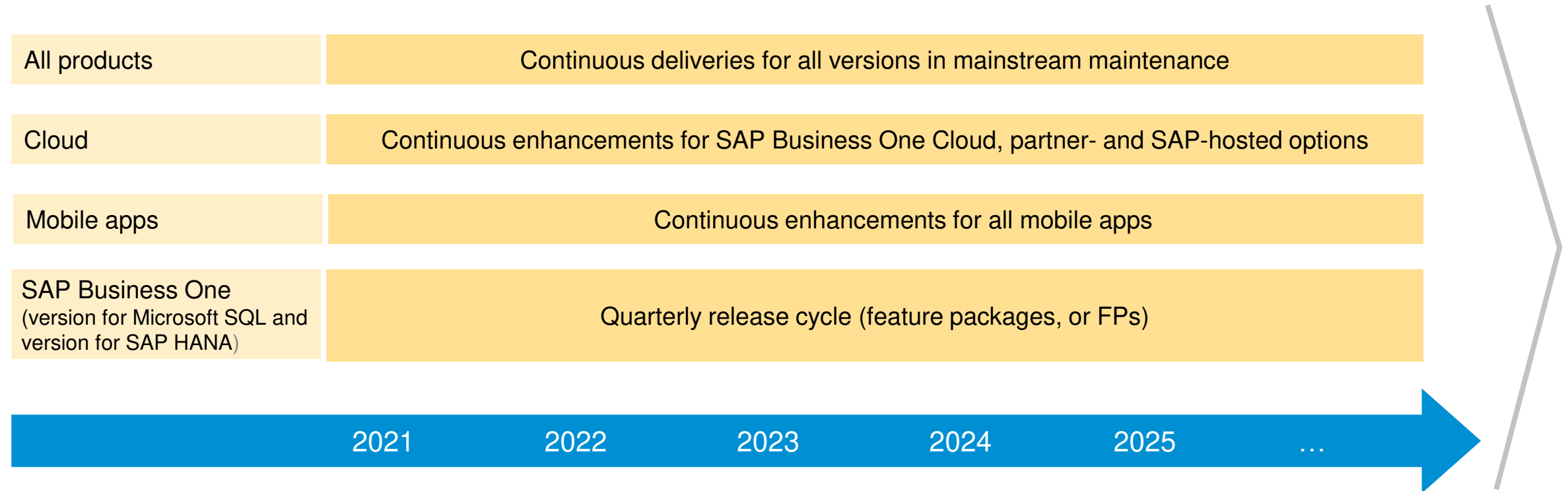
Straightforward consumption – cloud, on premise, and mobile

Accelerate the cloud transformation and drive mobile adoption; offer maximum flexibility, low complexity, and best control of the business for customers

This is the current state of planning and may be changed by SAP at any time.

SAP Business One releases and related products

Solid product road map with continuous innovation



Schematic illustration of major deliveries

This is the current state of planning and may be changed by SAP at any time.

High-level release story of SAP Business One, version 10

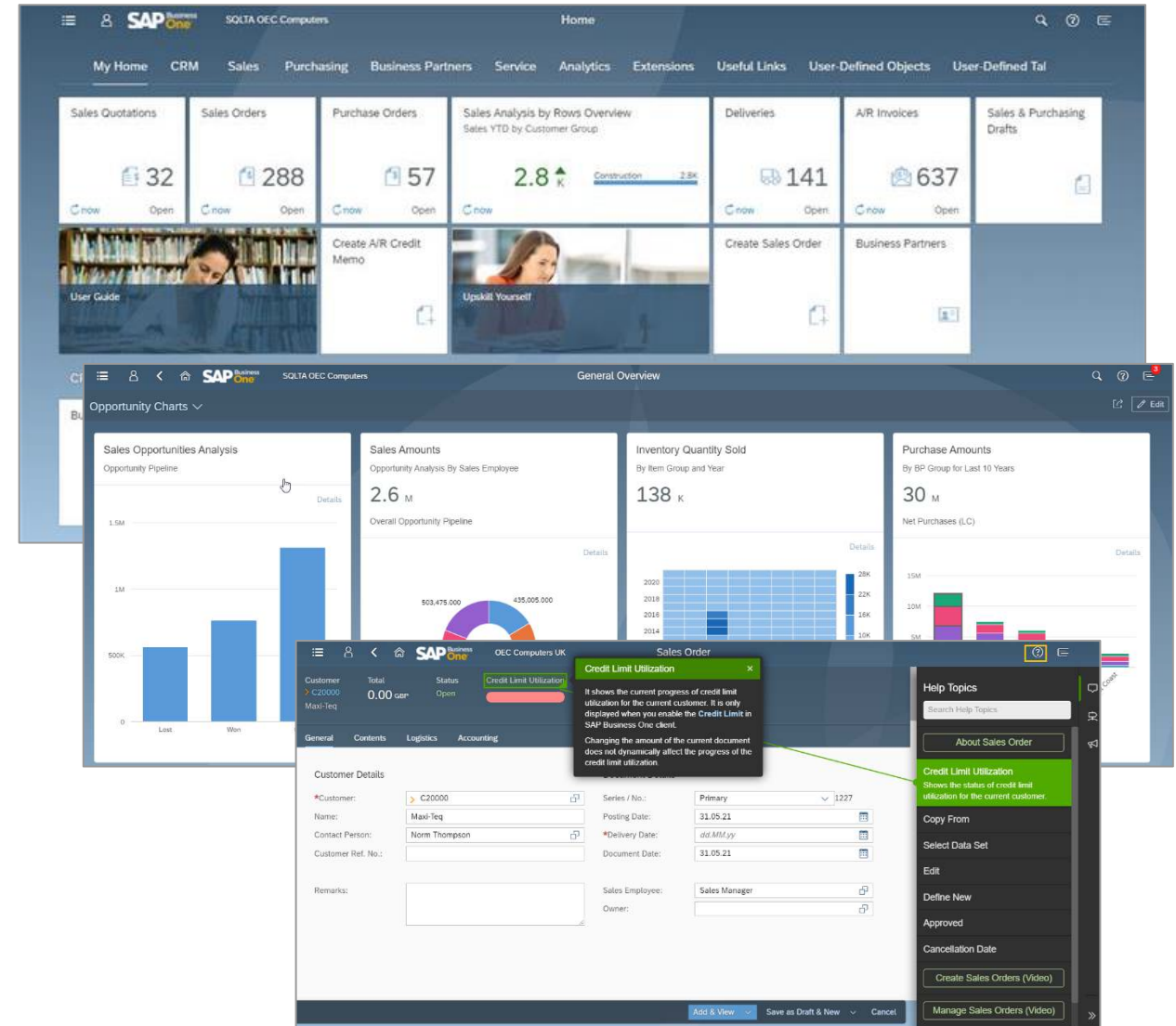
Version 10 focuses on ease of use and operation in the cloud. With its new or enhanced features and further ways to extend and integrate, it brings unprecedented value to customers and partners. This makes companies truly intelligent enterprises. The new technologies and processes allow for completely new and improved business models.

- The release **adds value by functions**, such as completed and new localizations and refined features, as well as by supporting cutting-edge technology such as SAP HANA 2.0, machine learning, and new analytical capabilities.
- The **user experience** is boosted by a new Web client, based on the intuitive SAP Fiori design system.
- The unique selling proposition of a **powerful and intuitive integration** is also significantly enhanced by major improvements in the **integration framework 2.0** and by additional **predefined integration scenarios**.

The logo for SAP Business One Version 10. It features the word "SAP" in a large, bold, grey sans-serif font. To its right, the word "Business" is in a smaller, grey sans-serif font, and "One" is in a larger, bold, yellow sans-serif font with a registered trademark symbol. Below "SAP Business One", the words "Version 10" are written in a large, bold, grey sans-serif font.

Web client for SAP Business One: The best of all worlds

- Based on SAP Fiori design principles, encapsulating SAP Business One core processes and business logic
- Focused on creation, processing, updating CRM, sales, purchasing documents, and payments
- Support for creation and update of items, business partners, activities and time sheet
- Support for service calls, solutions, and equipment card
- Sophisticated analytic charting capabilities and predefined analytics content
- Flexible deployment options – on-premise and in the cloud, can be used side by side with the SAP Business One client
- Support for Microsoft 365 integration (Excel, Word)
- Support for Outlook 365 integration
- Support for Microsoft Teams integration
- Support for extensibility – user-defined tables (UDTs), user-defined fields (UDFs), user-defined objects (UDOs), URL mashup, and SAP Fiori and HTML5 app support
- SAP Companion (Web assistant) adoption

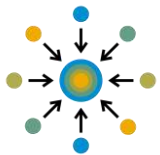


Web client for SAP Business One: Analytics



List view: Object-centered analytics

Take advantage of sophisticated filtering and visualization capabilities for deriving and presenting the data you need in every object list view



General overview: Gathering multiple data sources

Design cards based on any list view, analytical chart, user-defined objects and tables, or user-defined query, showing the data you need from various aspects



User-defined queries (UDQs)

Manage, create, edit, and preview UDQs; presented as standard list view and can be leveraged as a data source for cards on general overview



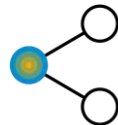
Linked views: Contextual analytics

Assign any view, general overview, or UDQ to any object to derive record-specific data



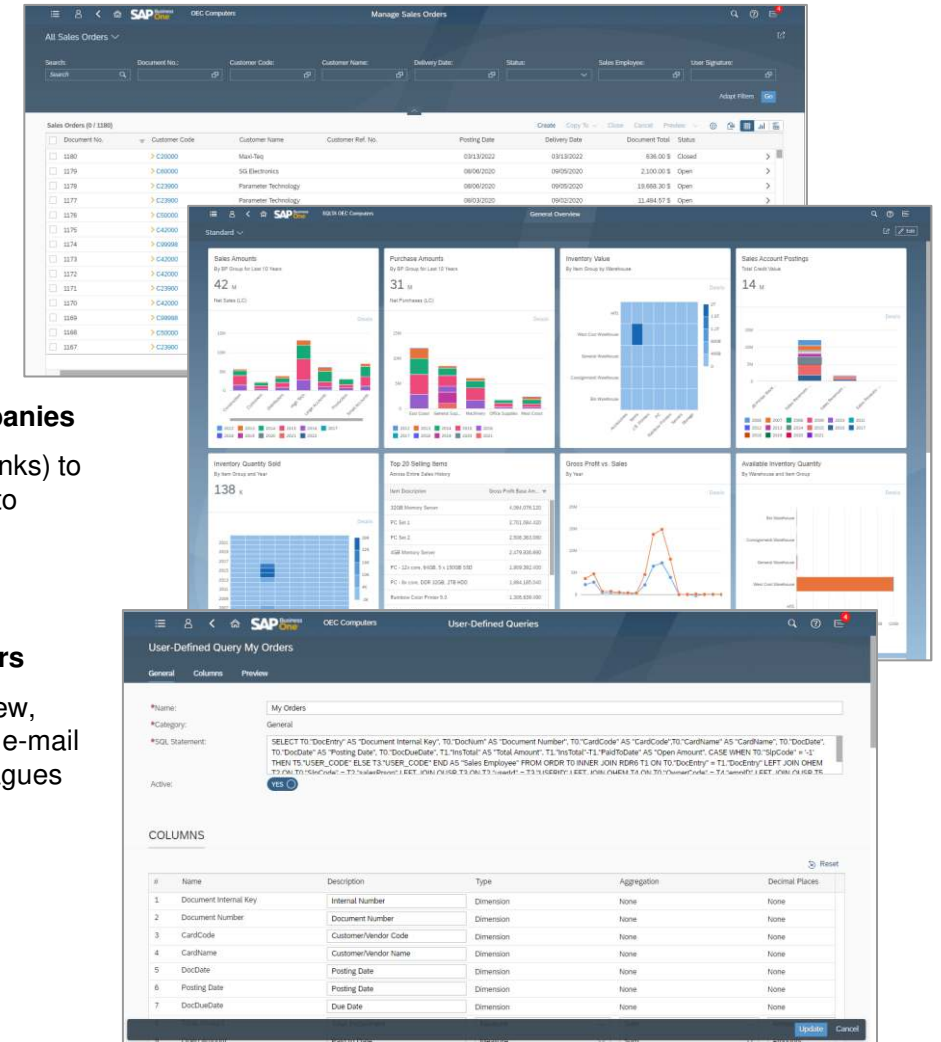
Export and import views: Collaborating across companies

Export selected views (and links) to a file that can be imported into other company databases



Sharing by e-mail: Collaborating between users

Embed a direct link to any view, general overview, or UDQ in e-mail body and send to your colleagues



SAP Business One 10.0, FP 2202: Key highlights (1/6)



Web client

Support for sales documents: quotations, orders, deliveries, returns, A/R invoices, A/R reserve invoices, and A/R credit memos

Support for opportunities

Support for purchasing documents: quotations, orders, goods receipt POs, goods return, A/P invoices, and A/P credit memo*

Outgoing SnB/Bin location selection

Support for service calls and solution knowledge base

Relationship map

Approval process and drafts incl. approvers

Support for business partner (BP) and item master data

BP catalog number and bar code support

Multiple branches

Freight charges

Exchange rate entry

Authorizations and data ownership

Incoming and outgoing payments

Support for activities and notifications

Goods issue support

Journal entry support

Equipment card support

Support for alternative items

Time sheet

Extension of localization support

Advanced analytics content and editor incl. import and export

User-defined queries

Linked list views

Enterprise search

Supported on SAP HANA and Microsoft SQL database servers

Support for single sign-on (SSO)

Customizable home page

Flexible list views

Support for 28 display languages

Support for message preferences

High-contrast UI theme

Attachment management

SAP Companion adoption

Microsoft 365 integration to One Drive (Excel, Word)

Outlook 365 integration

Microsoft Teams integration

Business card scanning with Document Information Extraction service

Support for KPI tiles

Support for APIs for new views

Support for “Display in menu” setting for UDTs

User-defined fields, tables, and objects

VSCODE plug-ins (URL mashup, apps), iFrame as a tile support

* Certain A/P documents supported in read-only for India

SAP Business One 10.0, FP 2202: Key highlights (2/6)



Localizations | Legal compliance

EU PEPPOL electronic invoicing support

Support for external VAT calc. in more localizations*

Multiple branches in year-end closing for all locs.

Create quick response (QR) codes in documents

Inventory valuation simulation report for all locs.

Fraud prevention headers version 3.0 (MTD) support for the UK

Electronic document framework enhancements

Electronic documents service and enhancements

Support for reference documents through Data Interface (DI) API

Helping ensure legal compliance and additional data protection and privacy (DPP) tools

Chart of accounts migration wizard for Portugal

One-stop-shop reporting for the EU

E-books incl. online sales reporting and expense classification enhancements for Greece

Electronic invoice CFDI 4.0 for Mexico

Mass UUID import for purchasing documents – Mexico

EU and country-specific (ES) Intrastat enhancements

Withholding retention calculation on documents for Argentina

Down payment invoice tax calculation enhancement for the United States and Canada

Qualified invoice method for Japan

E-checks support for Argentina

Electronic invoice enhancement 2022 for Italy

Nota fiscal eletrônica (NF-e) 4.0 electronic invoicing for Brazil

XRechnung e-invoices for Germany

Online VAT ID validation for the EU

Tax collection at source (TCS) on sales of goods for India

Bank statement processing (BSP) balance validation

Audit file (FEC) enhancements for France

Withholding tax enhancements for Mexico

Certificazione Unica enhancements for Italy

Online invoicing enhancements for Hungary

EU Sales Report and Report 349 enhancements for Spain

Form 1099 – NEC for the United States

SAP Crystal Reports layouts for Switzerland

E-billing (incl. bulk) and E- Way Bill enhancements for India

QR code on A/R invoice for Argentina and Portugal

ISO 3166 country codes support

SAF-T Tax Report for Norway

Series enhancements for period-end closing, exchange rate, and conversion rate differences

Folio enhancements for Chile

Electronic documents ATCUD for Portugal

*All localizations supported except Israel

SAP Business One 10.0, FP 2202: Key highlights (3/6)



Inventory | Distribution | Production

Serial and batch numbers mgmt. enhancements

Ability to change unit of measure (UoM) group of an item

Additional authorization groups for price lists

Item group name extended to 100 characters

Support for setting UoM group as inactive

Reverse and forward serial/batch no. trace report

FIFO layers report by consumption order

Updated item description applied to bill of materials (BOM)

Drill-down from BOM to item master data

Inventory counting enhancements

Extending field length of item description and industry

Modifying remarks and UDFs in closed production orders

Support for mass deletion of BOM

Disabling of duplicate bar codes when duplicating items

Procurement confirmation wizard based on production orders

Changing status of sales/purchase type in item master data

Opening last prices report through item master data

Displaying preferred vendor name in item master data

Default catalog number for item

Support for bill of materials in attachments



Financial management

Drill-down to G/L accounts in financial reports

Posting periods enhancements

Journal entry remarks extended to 254 characters

Financial enhancements

System messages before adding journal entries

Extended journal entry references

Updated journal entries with locked posting periods

Better printing preferences for payments and deposits

Report refresh enablement

Management of change log for exchange rates

SAP Business One 10.0, FP 2202: Key highlights (4/6)



Sales | Purchasing | Service

Allowing update due date in part. reconciled invoices

Backorder report enhancements

“Add and view” and “Add and close” in A/R and A/P docs

Printing service calls and contacts

Hiding blank lines in addresses

Proc. confirmation wizard support for gross and net modes

Opening item list enhancements

Enabling updating UDFs in closed documents

Setting problem types, call status, and more as “Active”

Flexible default “Valid until” date in sales quotation

Linking same equipment card to multiple BPs

New document status “Open e-mailed”

Store price list no. and name in marketing documents rows

Extended business partner effective price sources

Ability to hide document remarks

Copy attachment paths to target documents

Cancellations of return requests

Displaying item description in alternative items window

Updating consolidating business partner and consolidation type at document level

Document reference enhancement

Customer and vendor reference number enhancement

Document information extraction integration enhancement incl. service-type document support

Display sales document in procurement wizard if target document is canceled

Relationship map support for reference documents and opportunity

Blanket agreement fulfillment reporting enhancements



CRM

Customer and vendor group name extended to 100 char.

Viewing and updating address UDFs in docs, service calls, and address format setup

Support for filtering activity reports by UDFs

Link between contact person and BP address

Hiding inactive contact persons in BP master data

Currency display enhancement in BP master data

Configuring display of employee name

Telephone field extended to 50 characters

Foreign name field extended to 200 characters



Project management

Interactive Gantt chart

Sorting order for project stages

SAP Business One 10.0, FP 2202: Key highlights (5/6)



Administration

Enhancements in document printing

Reference documents enhancements

Support for attachments tab in additional objects

Deleting live collaboration history by date range

Enhancements in approval process

Tab-level authorizations in BP and item master data

Hiding employee no. to support DPP

Setting warning for single-user validation

Recurring transaction templates enhancements

Deactivation of shipping types

Hiding locked users

Enhanced user removal management

Open users – set up form in “Find” mode

Support for “Find next” function in authorizations form

Manual determination of path in general settings

Change log enhancement

Adding detailed errors for license imports

Enhancing license balloon appearance

Main menu form settings for indirect access users

Determining paths in general settings manually

Change in “Find next” rule in form settings

Sort forms in user interface configuration template

Change log entries for authorization user groups

Authorization to use “Copy table”

Authorizations for duplicate documents and records

Support for "Hide BOM in component" in SAP Crystal Reports layouts

Enhanced copy of single form settings

Authorizations in payments draft report

Adding authorization to “Remove opportunity”

Increasing no. of authorization groups

Allowing change log to read-only documents

Support for ability to retrieve a default value of an SAP Crystal Reports parameter

Enhancements to report and layout manager

BP payment terms without price lists

Approval process enhancements

Change log enhancements for employee master data

Attachment settings enhancements

Managing change log for system setup entries

New authorizations to time sheet

SAP Business One 10.0, FP 2202: Key highlights (6/6)



Platform | Extensibility

SAP HANA 2.0 platform adoption **SAP HANA®**

Support for SUSE Linux Enterprise Server 15 **SAP HANA®**

Service layer configuration UI **SAP HANA®**

Service layer supports Microsoft SQL database server

Service layer support for views on Microsoft SQL

Formatted search supports multiple triggers

Extending UDF support to additional objects

Microsoft 365 integration

Increasing menu item limit to 2,000

Extend DI API and service layer coverage

API access for CR reports

Integration hub

Security enhancements

Support for Microsoft SQL 2019

Extending service layer coverage

Linking UDFs to system forms and UDOs

Enable DI access to system permissions

Support for Visual Studio 2019 with SAP Business One studio

Enhancing UI API error handling

Support for queries through service layer

Adding queries to menus

Sizing guide for service layer

Unification of installation and upgrade packages for SAP Business One

Query manager enhancements

Support for SAP Crystal Reports 2020 SP2



Usability

New skin style **SAP HANA®**

Enhanced user interface

User name in license and add-on administration

Support for 4K monitors **SAP HANA®**

Revised SAP Fiori UI for Service and Sales mobile app



Lifecycle management | Cloud

64-bit support only

Support for version 10 in cloud control center*

Service unit to host multiple reseller operators*

Security compliance enhancements incl. add-ons

User and license enhancements

High availability for SAP Business One, version for SAP HANA ,10.0

Tenant configurator enhancements

Documentation from product software installation moved to SAP Help Portal

* Delivered through SAP Business One Cloud 1.1, patch level 16

SAP Business One

Product road map overview – Key themes and capabilities

Recent innovations

Core

- Web client release, covering sales and analytics functionality
- Continuous innovations based on market feedback (Customer Influence program)
- SAP HANA 2.0 and SUSE 15 support with SAP Business One, version 10
- Document Information Extraction service integration (purchase invoice scanning and business cards scanning)
- SAP Process Automation solution bots integration with SAP Business One
- Microsoft Teams integration

Globalization

- Electronic documents service enhancements
- Chile – Folio number enhancements
- Argentina, Portugal – QR code printing on documents
- EU one-stop shop reporting support
- Japan – Qualified invoice method support
- India – E-billing bulk invoice
- Portugal – Digital series reporting (ATCUD)
- Argentina – Withholding tax retention calculation by document

Analytics

- Innovations based on SAP HANA
- Support for QR code generation

Mobile

- Service and sales apps update for Microsoft SQL Server, iOS and Android

Extensibility and platform

- Enhanced Service Layer API
- SAP Crystal Reports API
- Microsoft 365 integration (Word, Excel, OneDrive)
- Service layer supports Microsoft SQL

Cloud

- Tenant configuration wizard
- Cloud infrastructure optimization
- Dockerized version of SAP Business One integration (iPass)

Planned innovations¹

Core

- Web client extended sales, purchasing, payments, service, financials, production, inventory, and analytics functionality
- Continuous innovations based on market feedback (Customer Influence)
- Intelligent ERP elements, such as machine learning and delivery of SAP Process Automation workflow manager integration with SAP Business One
- Outlook 365 integration enhancements
- Microsoft Teams integration enhancements
- Integration to SAP Product Footprint Management solution for clean operations

Globalization

- Electronic documents service enhancements
- Integration to the digital compliance platform from SAP
- Germany – ELSTER: Adoption of new ERiC versions
- India – E-billing invoice and E-way bill enhancements
- India – A/P down payment request support for TDS deduction
- Israel – Tax on document rows introduction
- Israel – Electronic invoice
- France – FEC audit file enhancements
- Poland – Electronic invoice 2024 (KSeF)
- Singapore – Submission of GST return
- Greece – E-books stamp duty support enhancements
- United States – Tax service enhancement with Avalara integration
- QR code formula builder

Extensibility and platform

- Enhance service layer API
- Web client extensibility
- Windows 11 support

Cloud

- Support for advanced user authentication (OIDC)
- Tenant configuration enhancements
- Staged introduction for regions and countries

Product direction¹

Core

- Extended Web client business process coverage
- Continuous innovations based on market feedback (Customer Influence)
- Optimized scalability and performance
- Simplification of landscape and deployment, support for containerization approach

Globalization

- Enhancement of existing markets and regions
- Integrations to electronic fiscal services
- IFRS compliance

Analytics

- Insight to action (data mining)
- Predictive, pervasive, and scalable
- Built-in content

Mobile

- Continuous innovations based on market feedback

Extensibility and platform

- Enhanced service layer API
- Enhanced Web client extensibility
- Event service support
- Model for partner content in the integration hub

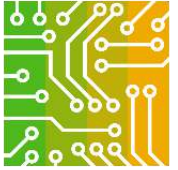
Cloud

- Support for advanced user authentication
- Deeper integration to Microsoft Active Directory
- Reduction of TCO

1. This is the current state of planning and may be changed by SAP at any time without notice.

Planned innovations: Core

Global, highly scalable real-time ERP



Feature	Feature value
<p>Optimize core business processes and continuously delivering enhancements and new features, based on Customer Influence</p> <ul style="list-style-type: none">▪ Optimize functions in logistics and inventory▪ Optimize functions in CRM and service▪ Optimize functions in financial▪ Enhance usability▪ Enhance Microsoft 365 integration▪ Incorporate intelligent ERP elements by SAP, such as machine learning and delivery of SAP Process Automation workflow manager integration with SAP Business One▪ Integrate to SAP Product Footprint Management solution for clean operations▪ Integrate SAP solutions adding value for SAP Business One customers▪ Automate online banking (integration of payment gateways used at SAP)	<ul style="list-style-type: none">▪ Increased attractiveness for new and installed base▪ Solid core foundation for building vertical solutions▪ Users enabled to consume core business processes across multiple platforms▪ Simplification, greater customer and partner satisfaction, reduced TCO▪ Latest versions of operating systems, database engines, or browsers used to apply innovations even faster in day-to-day business operations
Lifecycle management <ul style="list-style-type: none">▪ Optimize upgrade and installation processes▪ Optimize data import functions	

This is the current state of planning and may be changed by SAP at any time.

Planned innovations: Web client

Extend functional scope



Feature	Feature value
Extended business logic coverage and user experience <ul style="list-style-type: none">Extended sales and purchasing coverageServiceFinancialsExtended payments supportInventory managementProject managementProductionHuman resourcesNew Horizon theme from SAP	<ul style="list-style-type: none">Extended target audience by providing increased functional coverageExtending market coverageIncreased competitivenessIncreased efficiency and productivityReduction of TCO
Analytics, reporting, and printing <ul style="list-style-type: none">Extended analyticsAdditional reporting contentDesign capabilitiesSupport printing	
Integration and extensibility <ul style="list-style-type: none">Providing extensibility capabilitiesExtended Microsoft 365 integrationExtended Outlook 365 integrationExtended Microsoft Teams integration	

This is the current state of planning and may be changed by SAP at any time.

Planned innovations: Globalization

Legal compliance and localization enhancements

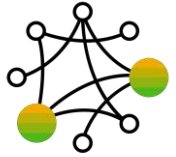


Feature	Differentiating factor
<ul style="list-style-type: none">Legal compliance and localization enhancements generically or specifically (legal requirements, business practice, statutory reporting, and default values)Localization expansion to potential new markets, increased number of supported languages, and harmonized functions across localizationsElectronic documents framework enhancements and country-specific built-in content using the electronic file manager add-on, electronic documents service, and integration frameworkElectronic documents service component extensionsIntegration and leveraging of existing cloud services from SAP for legal adaptations, such as the digital compliance platform, and SAP solutions for advanced compliance reportingIFRSGermany – ELSTER: Adoption of the new ERiC versionsUnited States – Tax service enhancement with Avalara integrationIsrael – Tax on document rows introductionIsrael – Electronic invoiceFrance – FEC audit file enhancementsIndia – E-way bill and e-billing enhancementsIndia – A/P down payment request support for TDS deductionPoland – Electronic invoice 2024 (KSeF)Singapore – Submission of GST returnGreece – E-books stamp duty enhancements	<ul style="list-style-type: none">Helping businesses to run worldwide, increased relevance for new customers and installed baseFacilitating customers in meeting their legal obligations (accounting, tax, invoicing, and reporting); legal complianceIncreased localization competitiveness that helps to win in the cloud globally; significant competitive advantage; and differentiating factorIncreased customer and partner satisfaction, merged back-legal add-ons that reduce costs, lower TCOHigher reporting flexibility for IFRS, U.S. GAAP, group reporting, or any local legal reporting requirements

This is the current state of planning and may be changed by SAP at any time.

Planned innovations: Extensibility

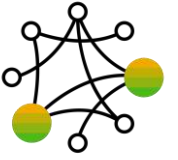
Extend SAP Business One with fully integrated solutions horizontally and vertically



Feature	Feature value
SAP Business One core <ul style="list-style-type: none">▪ Enhancement of service layer API▪ Web client extensibility▪ Event service support	<ul style="list-style-type: none">▪ Significantly expand the addressable market by providing a robust API for both SQL and SAP HANA▪ Optimize partner support by realizing requirements for flexible integration in customer projects▪ Enable solutions to run smoothly in the cloud by detaching the applications from the underlying infrastructure

Planned innovations: Integration framework

An extremely strong platform

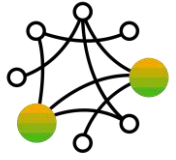


Feature	Feature value
Integration framework <ul style="list-style-type: none">▪ Completing the business process model and notation (BPMN)-based management layer▪ Mapping between DI API and service layer▪ Flexible event-handler mechanism to replace event sender▪ Support for advanced user authentication▪ Security enhancements	<ul style="list-style-type: none">▪ Straightforward and extremely flexible capabilities that make the integration framework the key differentiator for SAP Business One, turning SAP Business One into a robust business platform▪ Helping ensure integrations with little or no effort to other SAP and third-party applications▪ Extending system and business network capabilities▪ Data provision to any external system and data consumption from any external provider

This is the current state of planning and may be changed by SAP at any time.

Planned innovations: Intercompany integration solution

Complementary add-on from SAP



Feature

Intercompany integration solution for SAP Business One

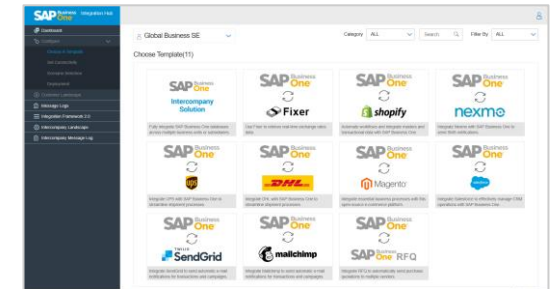
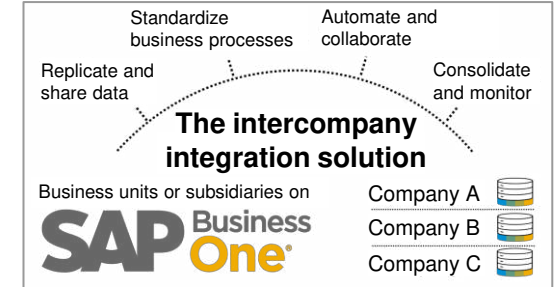
- Functional improvements such as automatic replication of UDF and UDT definitions to all branch companies
- A/R service invoice allocation
- Using the service layer where useful
- Further meaningful extensions that are requested through Customer Influence program

Integration hub for SAP Business One

- Additional preconfigured templates for the integration hub to integrate most-popular Web shops, CRM systems, expense management systems, SAP applications, or social platforms
- Further simplifications in use and setup
- Model for partner content in the integration hub

Feature value

- Intercompany integration harmonized across SAP Business One databases, massively reducing total operating costs, and optimizing business processes beyond countries or legal entities
- Tailor-made solution integrating cloud-based business applications and services
- Addressing typical requirements for fast digital integration
- Preconfigured templates with mapping and configuration defaults minimize time and cost for integration
- Offering inexpensive off-the-shelf solutions, most comprehensive implementation even without detailed knowledge of the solutions
- Harmonizing technology across multiple systems, data consistency across applications



Planned innovations: Mobile apps for the enterprise

Mobilize your workforce to support flexibility and efficient processes



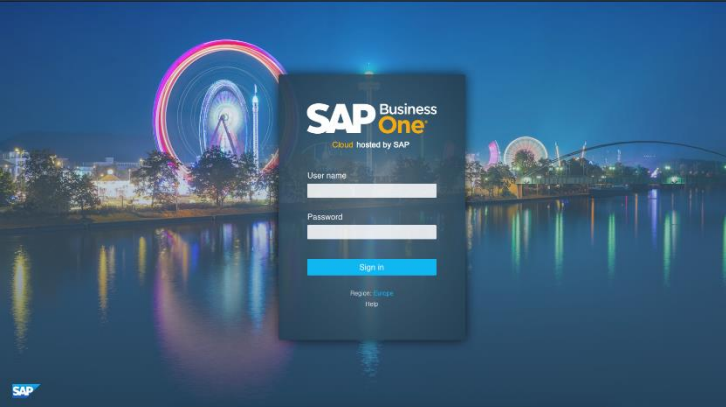
Feature	Feature value
<ul style="list-style-type: none">▪ Service app that allows ticket creation▪ Use of native device capabilities of latest devices▪ Evolving service layer into a platform for building innovative mobile solutions for verticals	<ul style="list-style-type: none">▪ Significant expansion of the addressable market, driving adoption▪ Increased workforce productivity▪ New collaboration methods and business practices with an intuitive and simplified user experience

This is the current state of planning and may be changed by SAP at any time.

Planned innovations: Cloud

Simple consumption and best scaling



Feature	Feature value
SAP Business One Cloud, SAP-hosted option <ul style="list-style-type: none">Improved self-services for resellersSupport for advanced user authenticationAdoption of an integration framework 2.0 for SAP Business One to support shared service units (through iPass)Security enhancements	<ul style="list-style-type: none">Technology that scales with the business and provides a competitive advantageAttractive offering for an increasing number of companies looking for cloud deploymentEasier and affordable deployment; reduction of TCOBetter tools for hosting partnersNew opportunities for partners to grow their businessShort time from purchase to deliveryFlexible, simple, and intuitive solutions for running an efficient business and managing hosting operations
SAP Business One Cloud, partner-hosted option <ul style="list-style-type: none">Enhanced tools in SAP Business One Cloud 1.1 cloud control center focusing on hosting partners, improvements for user experience, monitoring, and performanceSupport for advanced user authenticationEnhanced tenant configuratorIntegration to Microsoft Active Directory organizational unitsLifecycle management optimization (applying hot fixes, software component registration, service unit setup, maintenance setup)Security enhancements	

This is the current state of planning and may be changed by SAP at any time.

Learn more about SAP Business One

- ▶ [SAP Business One YouTube Channel](#)
- ▶ [Solution Brief](#)
- ▶ [SAP Help Portal](#)
- ▶ [SAP Support Portal](#)
- ▶ [SAP Learning Hub](#) – Training Material
- ▶ [SAP Community for SAP Business One](#)
- ▶ [SAP Business One Cloud](#) (Partners Only)
- ▶ [Customer Influence Session](#)
(Customers and Partners Only)
- ▶ Central Web Site for Web Client Content:
<https://learnbusinessonewebclient.com/>
- ▶ [SAP Community for Web Client Analytics](#)



Thank you

Follow us



www.sap.com/contactsap

Studio SAP | 55584enUS (22/08)

© 2022 SAP SE or an SAP affiliate company. All rights reserved.

No part of this publication may be reproduced or transmitted in any form or for any purpose without the express permission of SAP SE or an SAP affiliate company.

The information contained herein may be changed without prior notice. Some software products marketed by SAP SE and its distributors contain proprietary software components of other software vendors. National product specifications may vary.

These materials are provided by SAP SE or an SAP affiliate company for informational purposes only, without representation or warranty of any kind, and SAP or its affiliated companies shall not be liable for errors or omissions with respect to the materials. The only warranties for SAP or SAP affiliate company products and services are those that are set forth in the express warranty statements accompanying such products and services, if any. Nothing herein should be construed as constituting an additional warranty.

In particular, SAP SE or its affiliated companies have no obligation to pursue any course of business outlined in this document or any related presentation, or to develop or release any functionality mentioned therein. This document, or any related presentation, and SAP SE's or its affiliated companies' strategy and possible future developments, products, and/or platforms, directions, and functionality are all subject to change and may be changed by SAP SE or its affiliated companies at any time for any reason without notice. The information in this document is not a commitment, promise, or legal obligation to deliver any material, code, or functionality. All forward-looking statements are subject to various risks and uncertainties that could cause actual results to differ materially from expectations. Readers are cautioned not to place undue reliance on these forward-looking statements, and they should not be relied upon in making purchasing decisions.

SAP and other SAP products and services mentioned herein as well as their respective logos are trademarks or registered trademarks of SAP SE (or an SAP affiliate company) in Germany and other countries. All other product and service names mentioned are the trademarks of their respective companies.

See www.sap.com/trademark for additional trademark information and notices.